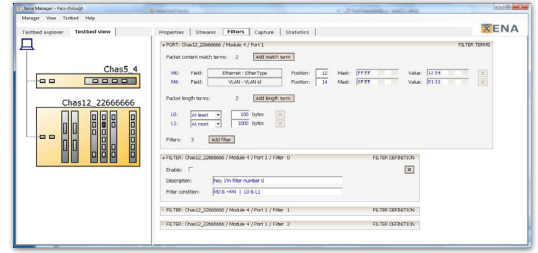


Xena Manager

GUI Framework for Xena Test Systems



Specifications

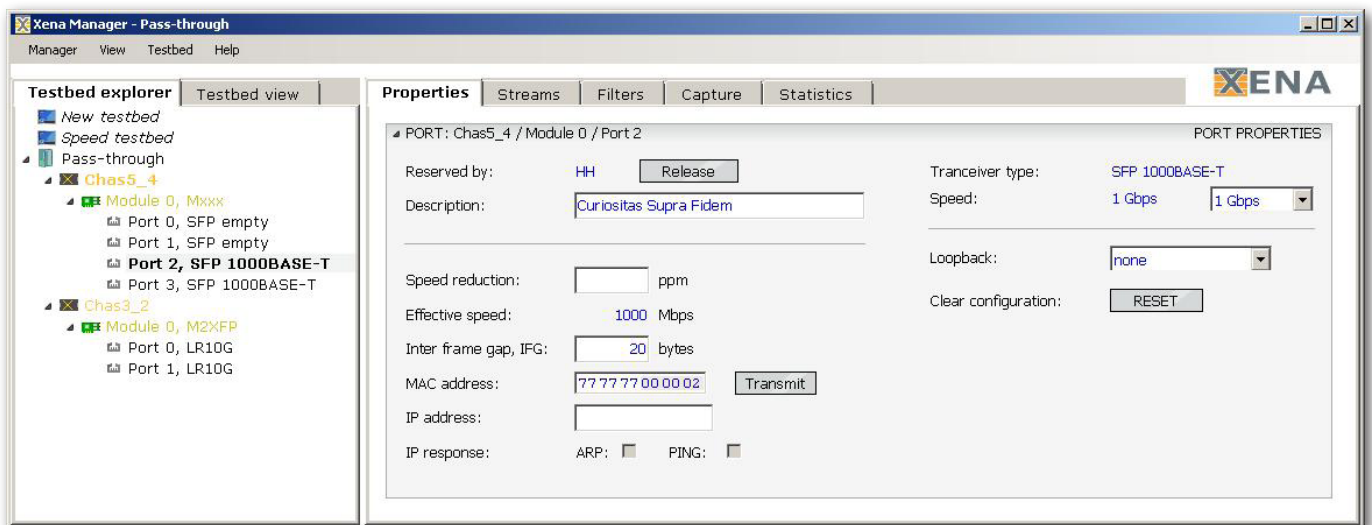
Xena Manager software

The Xena Manager software enables the traffic generation and analysis features of the Xena test equipment. Every Xena chassis has a dedicated standard 1G Ethernet management port connecting the chassis to an IPv4 network, through which the equipment can be discovered by the Xena Manager software. Each chassis has a configurable IP address and can thus potentially be accessed from anywhere. The Xena Manager can organize the discovered equipment into user defined test-bed setups, and supports multi-user environments. Hardware resources can be reserved down to test port level granularity from multiple simultaneous Xena Manager sessions. The Xena Manager offers lab managers the ability to perform software and firmware upgrades, eliminating the need to directly interface with the equipment.

All features of the Xena equipment can be enabled and accessed from the Xena Manager, which provides interfaces for configuring chassis and test port properties, defining advanced traffic streams for traffic generation, specifying filters for incoming traffic, performing real-time capture of packets, and for displaying and analyzing traffic statistics. The Manager's packet editor function supports both protocol (IP, VLAN, UDP, etc.) and byte-level packet definitions, and the packet capture function also has the capability to automatically decode the packet content at the protocol level.

Highlights

- Management of Xena equipment residing in geographically separate areas using TCP/IP
- Multi-user sharing of chassis resources down to the port level
- Discovery of Xena hardware located on the same (LAN) IP subnet
- Central management of multi-chassis testbed environments
- Explorer-based and front-panel layout view of testbed configurations
- Import/export of test case configurations
- Chassis software and firmware upgrades without needing to interface directly with the equipment
- Packet editor with support for both protocol and byte-level packet definitions
- Automatic protocol decoding of incoming packets



Specifications

200811_prodbrief_mgr

Feature	Xena Manager
Multi chassis environments	The Manager provides a central means of configuring and controlling multiple chassis, possibly located at different physical locations. User connection to a chassis is password protected, and equipment can be discovered or added manually by IP address.
Multi user environment	The Xena chassis supports multiple Manager sessions to a particular chassis, sharing the chassis resources between multiple users and multiple projects.
Testbeds	A testbed is a selection of one or more chassis and selected ports on each of these chassis. The various ports of a chassis may be assigned to different testbeds, and be used by different users. Testbeds can be copied and moved between PCs.
Test cases	A test case is a particular configuration of all the ports of a testbed, including what traffic to generate, which filters are active, what to capture, etc. Test cases can be copied or moved between PCs and chassis.
Navigation	The navigation area provides a explorer-based testbed view, which is complemented by a graphical testbed view of the front-panel layout of each chassis
Packet editor	The Manager has a compact and flexible editor for creating and inspecting packet data, at the byte and protocol level using built-in layouts for common protocols like Ethernet, VLAN, IPv4, IPv6, UDP, etc. You can edit the data bytes directly using their hexadecimal values, or you can click on the protocol segment labels to bring up a window allowing you to edit the individual protocol fields.
Product upgrades	Software and chassis firmware upgrades can be performed entirely from the Manager, eliminating the need to directly interface with the equipment
Operating system	Microsoft Windows XP or Vista